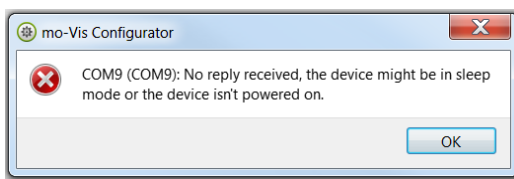


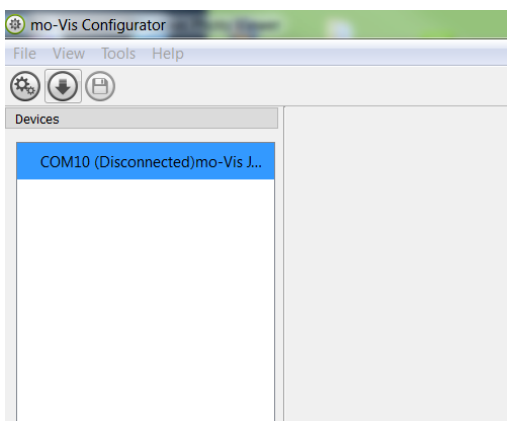
CONFIGURATOR SOFTWARE (S009-50)


Quick start guide

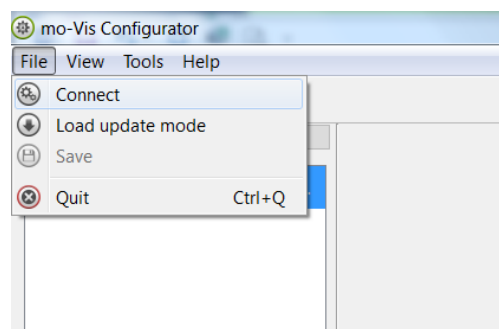
1. Download the Configurator Software from our website
<http://www.mo-vis.com/en/support/downloads>
2. Connect the mo-Vis Joystick or Multi Swing to the pc using a mini USB cable, make sure the Multi Swing gets power and is not in 'sleep mode'. When the device is in sleep mode or not powered on, you will get this message:



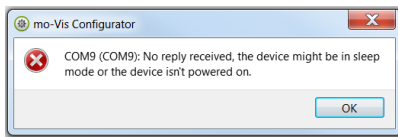
3. Open the mo-Vis Configurator Software.
Your computer will choose a COM port and recognizes the product that is linked to the pc, but still will show the status "Disconnected".



4. Click on the connect icon  to make the connection between the Configurator Software and the mo-Vis device, or chose in the menu bar File – Connect. (To disconnect the device, click on the same icon to disconnect or click on File and then click Disconnect.)



- When the device is in sleep mode or not powered on, you will get this message:

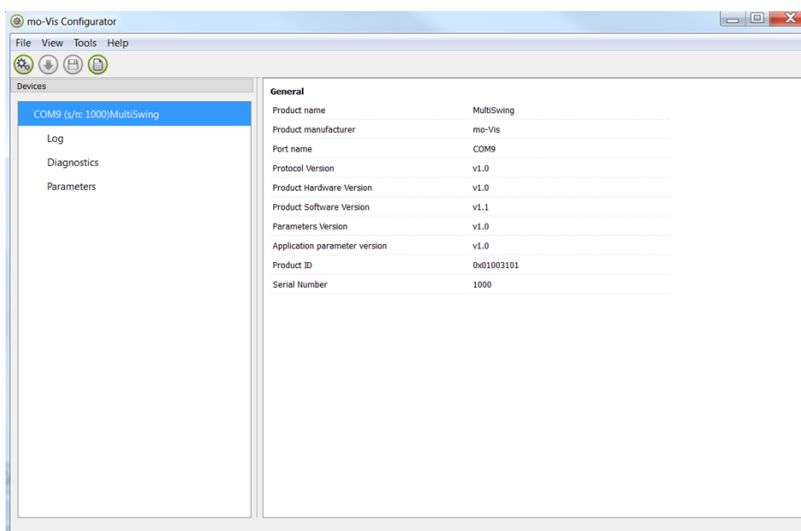


Power on the mo-Vis Joystick, Multi Swing or other mo-Vis device.

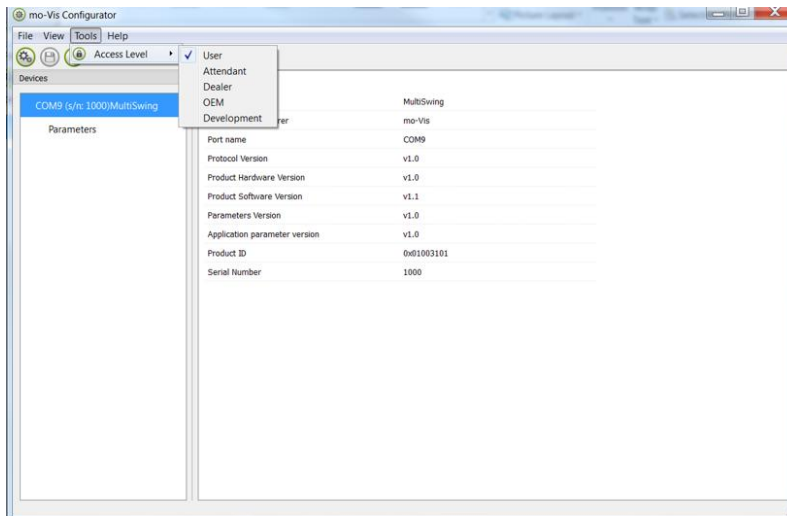
(For the make sure the Multi Swing is receiving power, activate it by pressing down the button to move the arm.)

Then try to connect again.

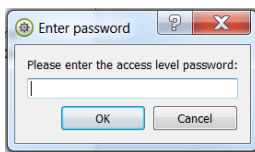
- Once the connection is made, the software gets all the details and information out of the mo-Vis device and will display them on the right-hand side of the window (serial number, product name, version, ...)



- The software program always starts at the lowest Access Level. To be able to get more information, or see and change more parameters, you can upgrade your Access Level from User to Attendant or Dealer. Click on the Tools tab in the menu bar and change the Access Level from User to Attendant or Dealer.



You will be asked to enter your password: Type the correct password:

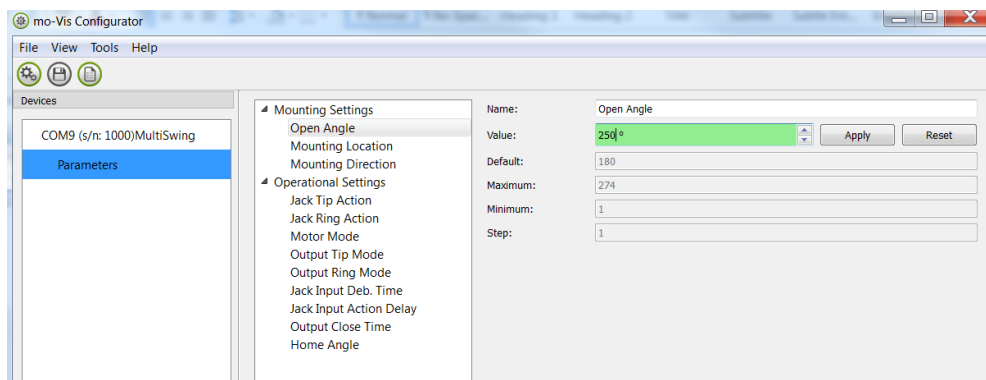



| | |
|------------|---------------------------------------|
| Attendant: | contact mo-Vis to obtain the password |
| Dealer: | contact mo-Vis to obtain the password |

Attention: these passwords are case sensitive!

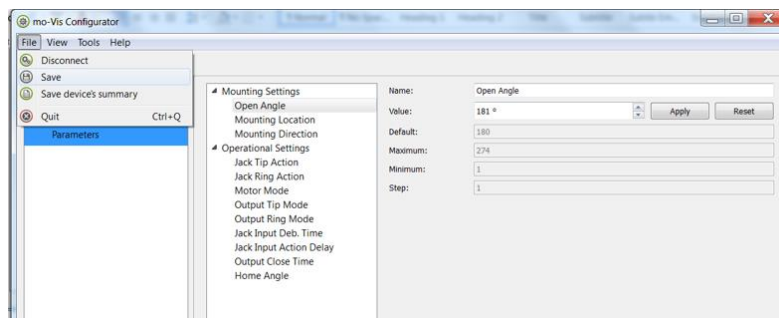
8. After you have correctly typed the password, you will be asked to restart the application. Any unsaved changes will be lost. If you did make changes and want to save them, choose No and first save your changes. If it's okay to restart the application, click Yes. The device will now be disconnected. So repeat step 4 to connect the device back to the computer. Depending on the Access Level, you will see General information, Parameters, Log and Diagnostics.
9. When you select "Parameters" a list of parameters will be shown, depending on the device that is connected to the pc.

By selecting one specific parameter you wish to adjust, the view on the right will display the stored, default, min. and max. values of that specific parameter. You can now change this parameter value by entering a new value in the textbox (or by clicking the arrows next to the text box) or by selecting a new value from the drop down box. Values that are being changed, will be shown in green.

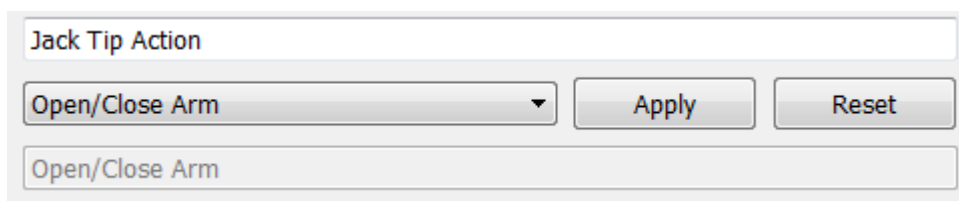


Click Apply to write the value temporary in the device (you can immediately test it), but the new value is not stored into the device yet. So if you would lose connection any changes you made will be lost. If you like to store the parameter values into the device, click on the save icon  or click in the menu bar on File – Save. From now on the new parameter values will be stored permanently in the device.

Attention: when you change a parameter without clicking the Apply button, the new values are not at all remembered. Once you click on any other parameter setting, the first parameter will go back to its previous settings.



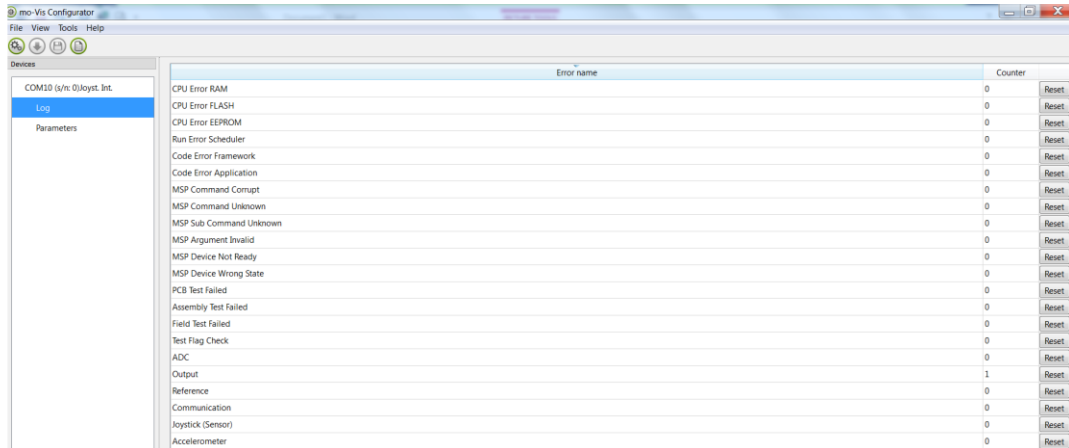
Clicking on the Reset button will set the parameter value back to the default value, click Apply to store locally and Save to write the change to the device.



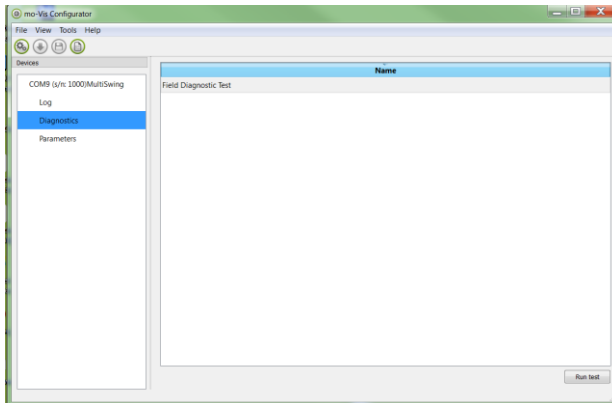
An overview of all parameters and their possible values/settings can be found in the manual of the device itself (Multi Swing, Micro Joystick, etc...).

10. When your Access Level is set to Dealer Level the categories “Log” and “Diagnostics” will be displayed as well.

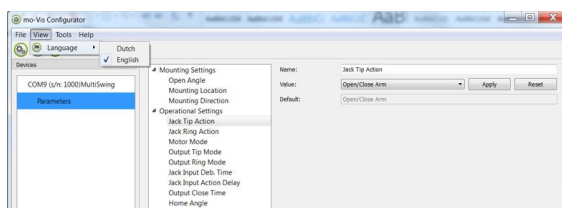
10.1. When you click on “Log”, a Log overview of all occurred Errors and/or actions will be displayed with a number of times that they occurred and a Reset button to set the counter back to zero.







10.2. When you click on ‘Diagnostics’ you will be able to run a Field Diagnostic Test. The information you get there can be important for service purposes. Click on ‘Field Diagnostic Test’ and then the button Run test to start the Field Test. When you use a Multi Swing, you must remove the arm before running the test.



11. Language: to change the language of the Configurator Software, click in the menu bar on File – View and select the new language you prefer.



12.  Save the device Summary: You can save all general product information and values of the different parameters into a file you can save in any folder of your computer. This can be important information to send to the support team.
- Make sure the device is connected to the USB port of the pc
 - If it is recognize it will appear in the 'Device View'
 - Select the correct device in the 'Device View'
 - Click in the menu bar on File- 'Save device's summary' or click directly on the 'Save device summary' icon . Choose a location to save the file.

13.  To close the Configurator Software, Choose File – Quit (Ctrl + Q) in the menu bar or click on the X of the Window .

Attention: you will lose all unsaved values if you quit the Software without first clicking on Apply and Save. If you use the menu bar to quit, your values will be saved automatically once you had already clicked on Apply. If you use the small cross on the right corner of the window, the software will automatically ask you if you want to save your changes before closing.

